

WATER DISPENSER

# AQA drink Pro 30

Version 01/2023



<b>1 COMMISSIONING.....</b>	<b>3</b>
1-1 RECOMMENDATIONS .....	3
1-2 HYDRAULIC AND ELECTRICAL CONNECTIONS.....	4
1-3 CO2 CONNECTION .....	5
<b>2 CONTROLS .....</b>	<b>6</b>
2-1 MANUAL SWITCH CONTROLS.....	6
2-2 PEDAL SWITCH CONTROLS.....	6
<b>3-TECHNICAL FEATURES AQUADRINK Pro 30 .....</b>	<b>7</b>
<b>4-ELECTRICAL DIAGRAM .....</b>	<b>8</b>
<b>5-HYDRAULIC DIAGRAM .....</b>	<b>9</b>
<b>6- DAILY CLEANING AND PERIODIC SANITARY MAINTENANCE .....</b>	<b>10</b>
6-1 FILTER CHANGE .....	10
6-2 DESCALING AND DISINFECTION.....	11
6-3 BWT FILTER DISINFECTION.....	11
6-4 INSTALLING AND CHANGING BWT CARTRIDGE .....	12
6-5 CONDENSER DUSTING.....	12
<b>6-TROUBLESHOOTING.....</b>	<b>13</b>
<b>7-SPARE PARTS.....</b>	<b>14</b>
<b>8- LEGAL INFORMATION AND WARRANTIES .....</b>	<b>15</b>
8-1 SYMBOLS .....	15
8-2 COMPLIANCE DECLARATION .....	15
8-3 WARRANTIES.....	15
<b>9- DATASHEET .....</b>	<b>16</b>

# 1-COMMISSIONING



Check that the device and its packaging have not been damaged during transport. The commissioning of this device must be carried out by a skilled technician.

## 1-1 Recommendations

***This device is only for indoor locations, in dry areas, sheltered from freezing conditions.***

Avoid the installation in a location where temperature is high or in a room directly exposed to sunlight (for instance behind south-facing glazing).

Avoid the installation in wet conditions, in dusty rooms or exposed to direct projections such as sink, stove, dishwasher, and so on.

Water dispensers shall not be cleaned or disinfected with corrosive chemicals, especially stainless steel and metal parts (e.g. : Chlorine). Rinse well and follow the recommendations on the products used.

### ***If the device is transported during installation***

It must be held and not drawn. The product shall be transported upright to avoid any damage to the compressor. When protective packaging's are removed, please take care not to scratch the device with a cutter for example.

### ***Do not recessed the device***

Keep a distance of minimum 10 cm at the back of this device for a good performance of the cooling system.

### ***Electrical connections***

Before any electrical connection, check imperatively that the mains voltage is single phase 230V.

This electrical connection must be done on 2P+E electrical outlet supplied with 3 x 2.5mm<sup>2</sup>, equipped with appropriate protection.

### ***Activation of the activated carbon filter (if necessary in case of inline filter)***

To activate the filter, this operation must be carried out outside the device. Allow at least 5 liters of water to flow, until the water is clear.

### ***For any installation, it is recommended***

- to choose the closest point for water supply to its location to limit the length of the connection pipe (recommendation: limitation to 5 meters of pipe).
- to check the compatibility of the water pressure of the network with that of the maximum of the device and to install a pressure reducer if necessary.
- to systematically install a shut-off valve to isolate the appliance from the network for any technical intervention or during water supply problems.

- to systematically install a "Waterblock" type anti-leakage system to prevent any major leaks. (Adjustable between 5 and 50 liters)

## 1-2 Water inlet connection : Warning !

*The device shall be connected only on the the cold drinking water supply network, with new flexible pipes, in accordance with the legislation in force. Before any connection, purge the water installation. Our devices are designed for a maximum pressure of 4.5 Bar.*

Permanently connect the device.

*The water supply is via a flexible hose Ø1/4" with a length of 1.5m.*

This tubing is coiled around the back of the unit and should be connected to a 3/8" threaded shutoff valve. A 3/8" (12-17) threaded fitting is supplied with this unit.



*Please before any electrical connection, double check the ice bank water level.*

Filling is necessary to avoid complete icing of the tank that may lead to serious water damages. A small window enables to verify water level and filling into the ice bank.

Open the water tap of the installation.



*Hot water version : when commissioning, check if necessary the temperature setting of the boiler thermostat. It should be set to 85°C.*

As soon as the water dispenser is connected to the water network, it is mandatory to press on the hot water switch to fill the boiler. Press on the switch until hot water flows out of the service aerator.



*CO2 versions: when commissioning the water dispenser, service the carbonator as well.*

As soon as the water dispenser is connected to the networks , it is mandatory to press on the sparkling water switch to fill the carbonator. Press on this sparkling switch until sparkling water flows out of the aerator. Open the CO2 tap. For CO2 tank connection, please see on the following page.

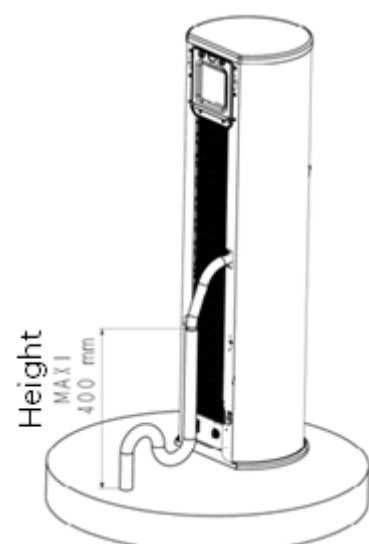
*After the connection of the device, the waiting time to get cool water is approximately between 1 hour and 1 hour 30*

### *Water drain, references with drain :*

- The drip tray is directly connected to the waste water by a Ø20 x 26 flexible pipe. Provide a Ø28 x 32 PVC with siphon. Maximum height of the evacuation is 400 mm

### *References without drain :*

- The drip tray of 0,7 liter shall be regularly emptied
- Electronic switching off protection in case of full drip tray (option for CA model and always for HCA)



### 1-3 CO2 connection (model CAS)

Unclip the bottle from its retaining collar by pulling it.

Unscrew the empty CO2 bottle.

Screw on the new gas cylinder.

➔ Note: a slight noise is heard when screwing on the full CO2 bottle.

Check the CO2 pressure on the regulator between 3 and 5 bars.

Draw off the carbonated water circuit until you obtain carbonated water.

Note: Sparkling water may appear cloudy until the water is perfectly chilled. The effect wears off quickly.

Reattach the bottle, taking care to insert all the tubing inside the fountain.



Read carefully the safety instructions that are printed on the CO2 bottle.

### Tuning of the sparkling level :

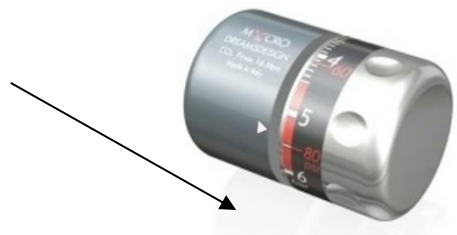
This setting is made directly on the gas regulator, tune it according to the gas level rate you want to get, between 3 and 5 bars.

Increase or decrease the CO2 pressure with the regulator mounted on the bottle.



**WARNING: 5 BARS MAXI**

Note : The more CO2 pressure is high, the more CO2 use is high. With 600gr bottle it's possible to deliver approximately 100 to 120L of sparkling water.



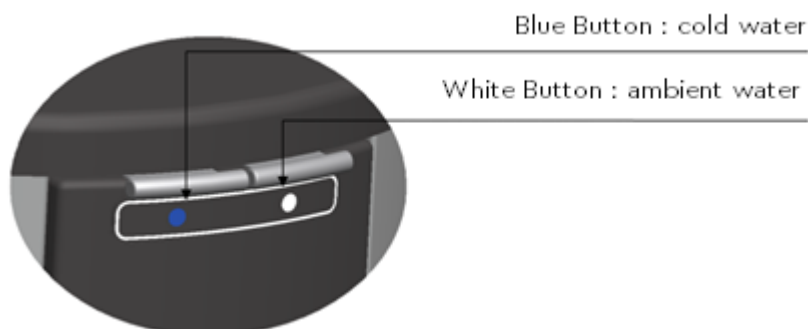
## 2- CONTROLS

*The device is equipped with manual switching buttons (-B) or pedals located on the ground (-P)*

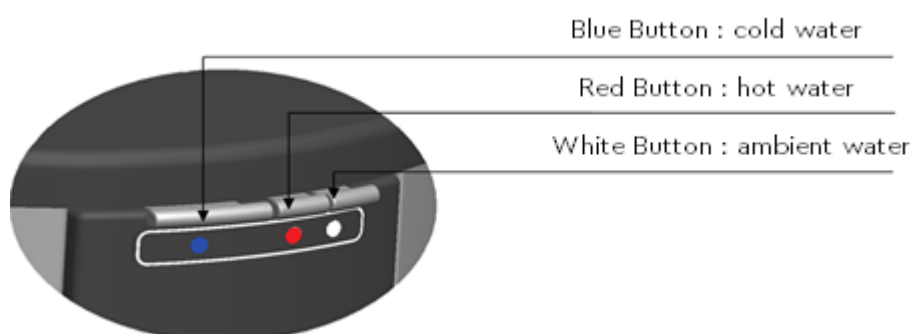
### *2-1 Manual switching controls : (-B)*

A pression on the switching button enables to deliver water as long as the pression is maintained.

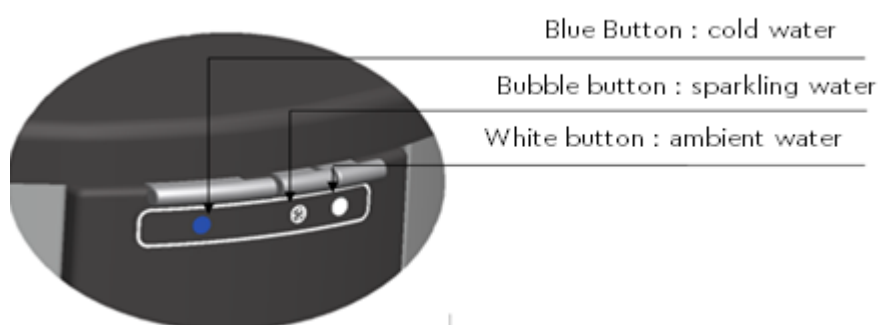
#### *Model CA : Cold I Ambient*



#### *Modèle HCA : Hot I Cold I Ambient*



#### *Modèle FTCO2 : Froid I Tempéré I Eau gazeuse*



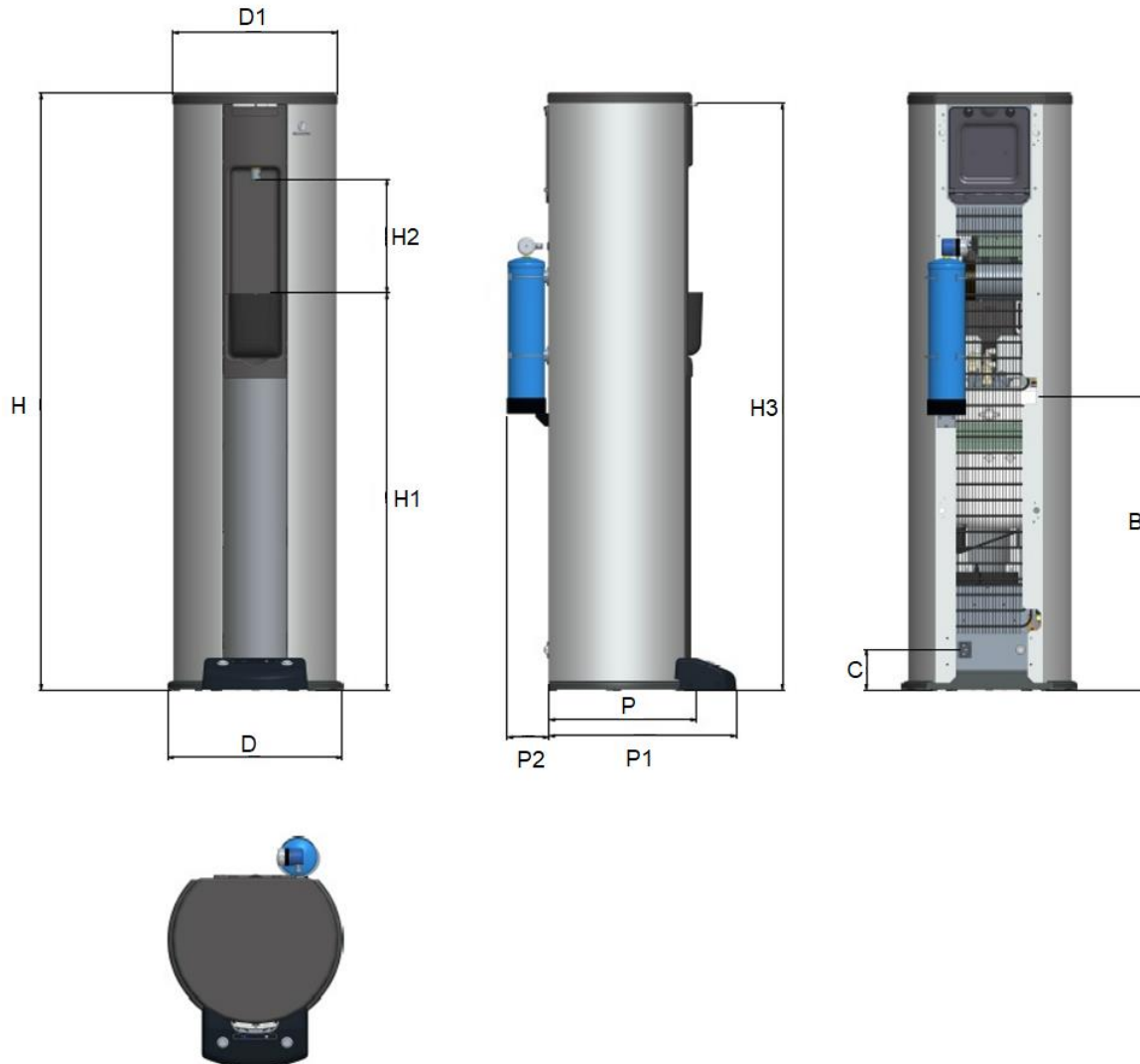
### *2-2 Pedal controls : (-P)*

Models with foot control have a plate mounted on the foot of the fountain. Pushers can be operated by foot replacing or in addition to manual controls. The colour codes are identical to the -B models.



### 3- TECHNICAL FEATURES

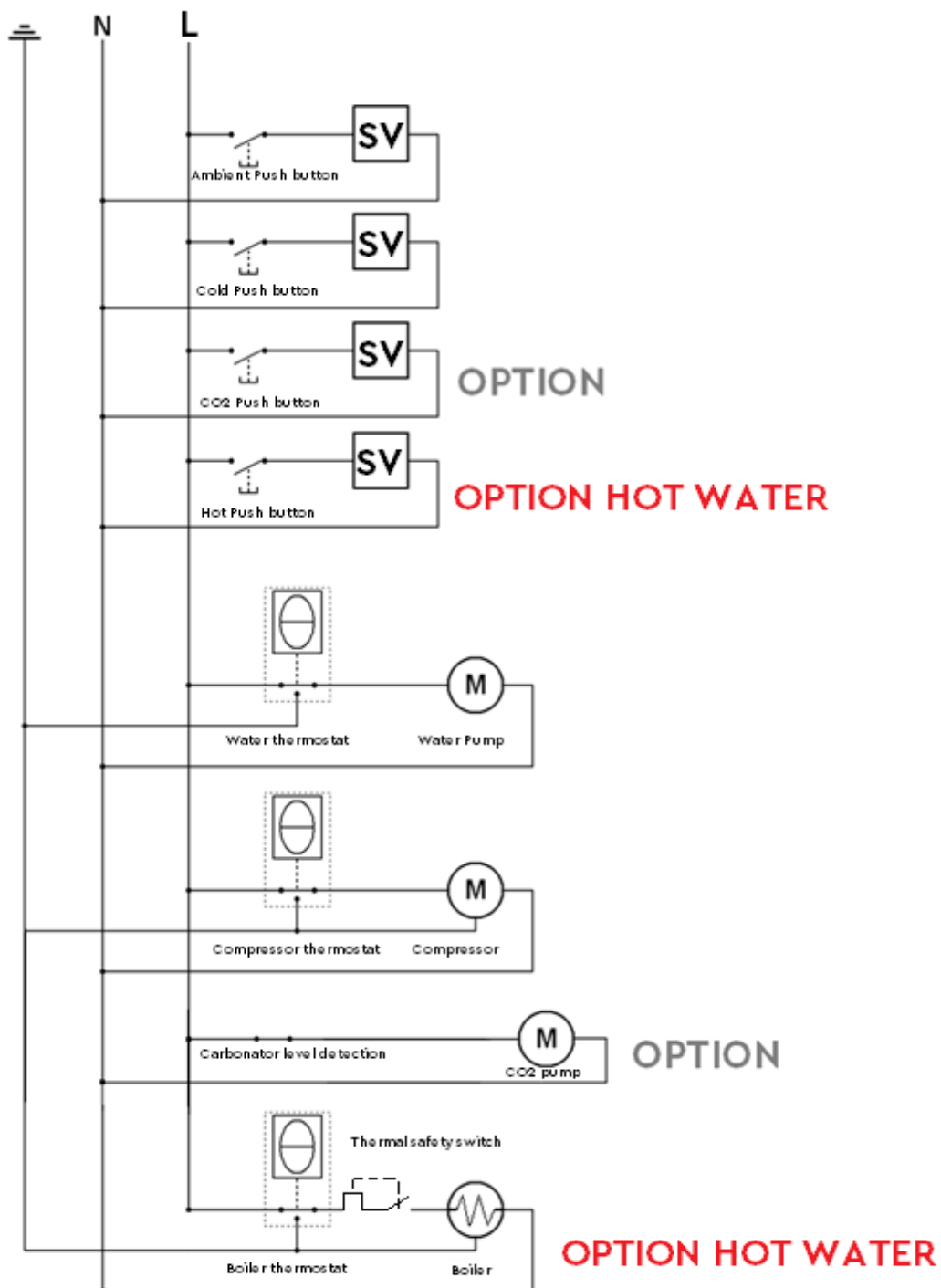
Device size : AQA Drink Pro 30



Dimensions		
H : Total height	1132	mm
H1 : Cup dispenser height	750	mm
H2 : Service Area height	225	mm
H3 : Controls height	1112	mm
D : Base diameter	Φ332	mm
D1 : Water dispenser diameter	Φ314	mm
B : Drain height	567	mm
C : Supplies height	75	mm
P : Depth (w/o options)	280	mm
P1 : Depth with controls	356	mm
P2 : Bottle depth (option)	91	mm

Datasheet: please, see on the last page.

## 4- ELECTRICAL DIAGRAMS

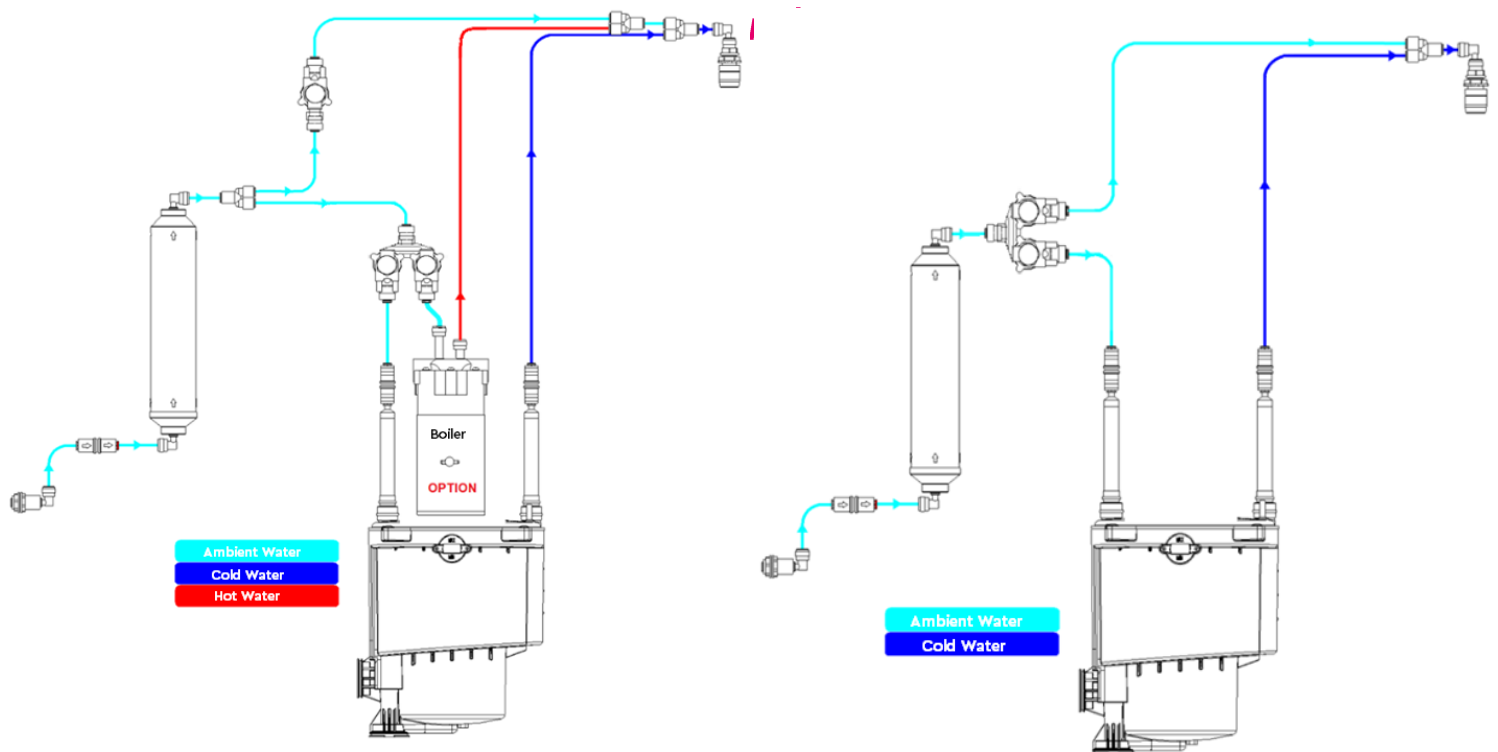
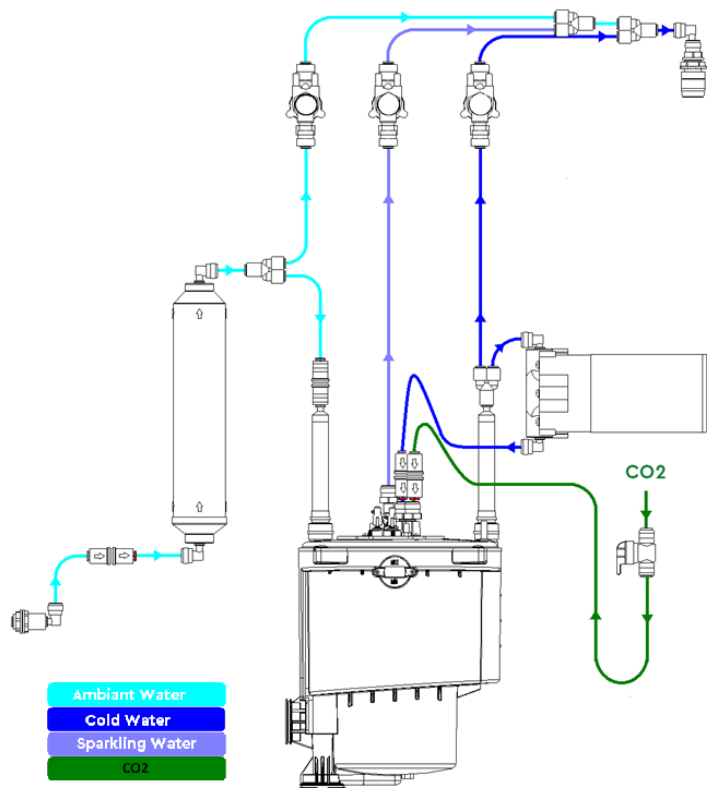


**Warning, before any maintenance in the water dispenser, it shall be disconnected from the mains.**



## 5- HYDRAULIC DIAGRAMS

### 5-1 CO2 DIAGRAM



## 6- DAILY CLEANING AND PERIODIC SANITARY MAINTENANCE

### DAILY CLEANING

● Clean the service area and the casing of the appliance with a non-aggressive detergent. Do not use an abrasive sponge.

● Plastic parts shall not be cleaned or disinfected with solvents (E.g. Acetone). Rinse well and follow the recommendations on the products used.

Clean the water outlet with a single-use wipe. Depending on the hardness of the water, plan to descale the aerator and the drip tray (see descaling product in our catalogue).

● Clean the water outlet with a single-use wipe. Depending on the hardness of the water, plan to descale the aerator and the drip tray (see descaling product in our catalogue).

### PERIODIC SANITARY MAINTENANCE

To keep this device in good working condition and guarantee the quality and safety of the water distributed, a minimum annual maintenance is mandatory. It requires the intervention of a skilled technician. The customer can define a more frequent maintenance of the fountain. Filter replacement is recommended every 6 months or when capacity is reached or before 6 months.

For descaling and disinfection of parts in contact with water, please contact us

#### 6-1 In line filter change

- Water out: first close the water inlet valve.
- Depressurize the water network by pressing any water switch control.



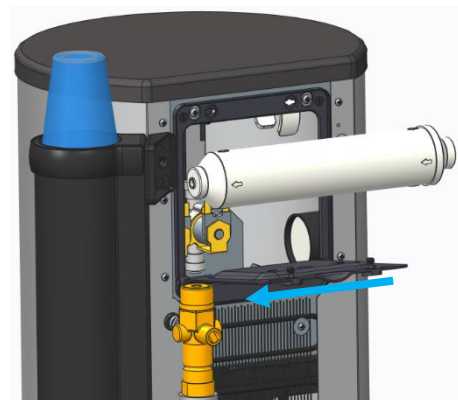
Switch off the mains. Before any work into the device, this one shall be imperatively switched off from the mains.

- Open the back plate of the machine
- Remove the filter
- Remplace the old filter by a new filter. Take care of the water flow to respect the way of this flow printed on the cartridge.



It is recommended to wear disposable gloves for handling the new filter. Reconnect the water dispenser, beginning with water

- Switch on the machine.
- Activate the filter outside the fountain by leaving the cold water valve open until the water runs clear. Check that there are no leaks from the new filter
- Close the backplate of the machine.



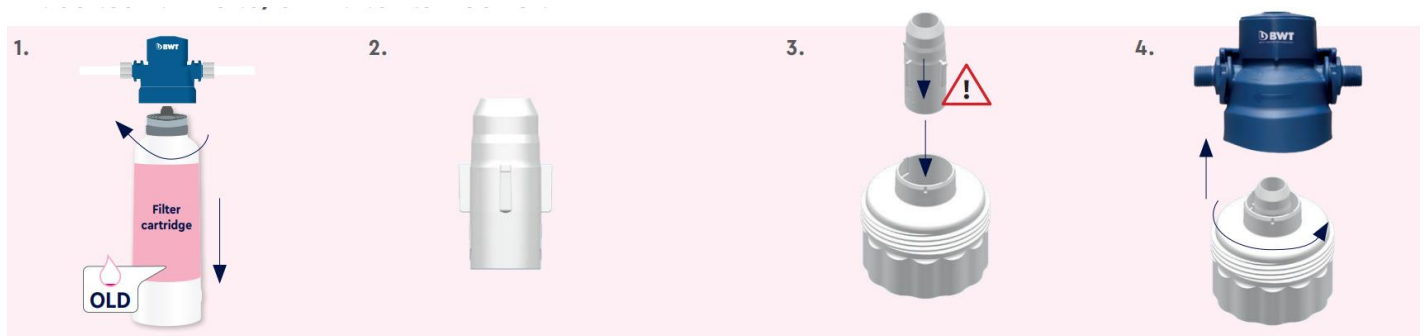
#### 6-2 Descaling and disinfection of the waterdispenser

Turning off the water then turning off the appliance: first close the water inlet valve. Depressurize the water system by pressing any water control button. Switch off. Then, before carrying out any operation inside the device, it must be disconnected from its power source.

Open the rear door of the device.  
 Do the descaling agent dosage (do not exceed 10%).  
 Remove the filter.  
 Connect the unit to the water supply of the device.  
 Insert the disinfection pump inlet tube into the descaling solution.  
 Switch on the unit and purge by pressing the control button.  
 Check that the descaling solution comes out of the water outlet.  
 Leave the descaling solution to act for about 10 minutes.  
 Repeat the operation if necessary.  
 Reconnect the water supply and rinse.  
 Repeat the operation with the disinfectant solution.

### 6-3 Desinfection of the water circuit, BWT filter

- Turn off the water first. Depressurize the water system by pressing any water control button. Switch off the machine.
  - Unscrew the filter at the back side of the dispenser 1.
- Get the EasyCare Tab 2 disinfection kit.
- Follow the kit instructions to put in place the disinfecting kit and the plug into the filter's head 3. et 4.

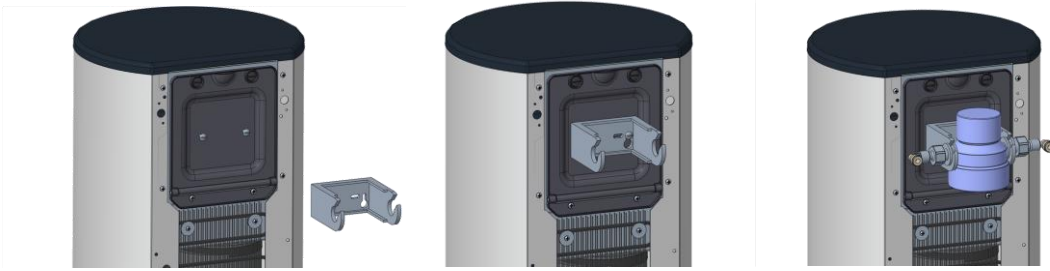


- Purge by activating both cells simultaneously. Use a large container on the serving area. Rinse with 5L.
- Leave the solution to act for another 15 minutes.
- Turn off the water and remove the sanitizing cartridge from the filter head 6. and replace the filter cartridge. Put back in water.
- Rinse by emptying the container and draining approximately 10L.
- Dispose of the EasyCare 7 treatment tablet (ordinary waste). And keep cap 8.



### 6-4 BWT cartridge change

When commissioning, install the cartridge at the rear of the machine: unscrew the two screws on standby, mount the support and clip the filter head onto it.



The filter cartridge must be replaced according to its filtration capacity and the water flow. At the latest, it must be replaced after 12 months following its commissioning or an interruption of more than 4 weeks.

- Shut off the water supply to the machine.
- Unscrew the filter clockwise. Replace a new filter equivalent to the one removed from the machine. Screw it back in the opposite direction.
- It is recommended to wear disposable gloves when handling the new filter.
- Put the machine back into water
- BWT Activated Carbon filters must be rinsed and purged. Use a large container in the service area and activate a water outlet to drain approximately 10L
- Dispose of the filter cartridge according to local disposal regulations.

### **6-5 Dusting of the condenser** (At least : every 2 years)

- Check the condition of the condenser and clean it if necessary using a brush.



An obstruction of the latter can damage the compressor and cause a breakdown

## 6- TROUBLESHOOTING

SYMPTOM	SOLUTION
<b>WATER DO NOT STOP FLOWING</b>	<p>1 – Turn off the mains.</p> <p>2- If water flows, turn off the water: A solenoid valve is blocked in open state. Repair it or replace it if this part is faulty.</p> <p>3-If water stop flowing, a solenoid valve remains on with 230V permanently. A control switch is faulty. Double check the micro-ruptors, and the buttons mechanism. Check that aluminium buttons are not blocked.</p>
<b>NOT ENOUGH COLD WATER</b>	<p>1 – Check if the water connection has been made.</p> <p>2 – Check the cleanliness of the condenser and that it is hot</p> <p>3 – Make sure that there has not been a large draft beforehand (&gt;3L).</p> <p>4 – Check that the water level in the icebank is correct (window).</p> <p>5 – Check the correct positioning of the thermostat sensor (compressor). Otherwise replace it.</p>
<b>NOT ENOUGH HOT WATER</b>	<p>1 – If the fountain is dripping, the water heater is on. Wait a few minutes for the temperature to reach its set point.</p> <p>2- The water heater thermostat is out of order</p> <p>3- The thermal safety of the water heater must be reset</p>
<b>NOT ENOUGH WATER FLOW</b>	<p>1 – Check the good condition of the water supply pipe.</p> <p>2 – Check the pressure and flow upstream of the fountain.</p> <p>3 – Presence of an anti-leakage system (water block): Check that the system is properly engaged.</p> <p>4- Check by shunting the filter that it is not clogged.</p> <p>5 – Check that the fountain is not iced up if the cold water service is concerned (check that the temperate water flows normally). Unplug the fountain for a few hours and try again.</p>
<b>CO2 IS POOR</b>	<p>1 - Check that there is still gas in the bottle. If not, replace it.</p> <p>2 – Increase the gas flow (WARNING 5 Bars Maxi)</p>
<b>ONLY CO2</b>	<p>1 - Check that the water supply pipe is in good condition.</p> <p>2 – Check that the gas pressure is not greater than 5 Bars. The pump has failed.</p> <p>Turn off the gas supply, and run water until you get still water from the soda outlet. You should hear the high pressure pump.</p> <p>Lower the gas pressure using the reducer, open the gas supply and run water until the Soda is obtained.</p>
<b>DRIP TRAY OVERFLOW</b>	<p>1 – Check that the drain pipe is not clogged (model with drain).</p>

## 7- SPARE PARTS

For maintenance and to replace some parts, this list is not complete, please ask us.

<i>Reference</i>	<i>Description</i>
11002123	Black Dispenser Top
35000102	Single ¼" solenoid valve kit (screws and connector supplied)
35000103	Twin ¼" solenoid valve kit (screws and connector supplied)
11001277	Water pump
11000044	Ice Thermostat / Standard Group
11000056	Water Thermostat /Standard Pump
22001020	Hot Water Thermostat
37002002	CO2 membrane pump 230V (with plugs)
11002360	Level detection controller
11002361	Level detection controller with drip tray cutting feature
1003104A	Drip tray grid
61000030	Cold water in line filter with built-in quick connector ¼"
61000040	Hot water in line filter with built-in quick connector ¼"
11002115	Drip tray with drain (alone)
11002249	Sub/assembly drip tray for version without drain
62020002	Black high front cover (+Command AC+ drip tray w/o drain+aerator)
1003411D	Black low front cover
41101006	Aerator alone w/o bracket
41101060	Aerator with bracket and fixing screw
	Best Taste Filter
61002073	BWT EasyCare Adaptor (x1)
61002074	BWT EasyCare TAB tablet (x20)

## 8- LEGAL INFORMATION AND WARRANTIES

### 8-1 Symbols :



This logo on the product means an electrical hazard. It is not allowed to open any part of the machine covered by this logo. Contact a skilled and authorized person to do it.



This logo means an hazard that shall be taken into account to avoid damage to equipment or personal injury.



■ This symbol means that the product is end of life electrical and electronic waste and must therefore be treated as such, it contains components that can be harmful to the environment and health. This product also contains components that can be reused or can be recycled. Please consult the information of your local authorities concerning the collection of electrical and electronic waste. National rules for waste collection must be observed according to the WEEE Directive (2002/96/EC)

### 8-2 Compliance declaration :

AQA Drink Pro30 complies with the European directives applicable in the context of CE marking, and in particular directives 2014/35/EU and 2014/30/EU. It also complies with the provisions of European regulations 1935/2004 and 10/2011 relating to drinking water and materials in contact. Compliance certificates are available on request.

### 8-3 Warranties :

AQA Drink Pro30 comes with a 1 year warranty. The instructions in this manual must be followed to benefit from the guarantee. This warranty will be excluded in particular if:

- The instructions were obviously not followed
- The instructions were not executed in the required order
- The recommendations were not taken into account
- Components have been replaced or modified without our validation
- Conditions of use do not comply with this notice
- Insufficiently qualified and trained personnel have worked on the equipment
- A use of the product that does not comply with its intended purpose has occurred

Some parts are excluded from the warranty, in particular all parts relating to filtration or disinfection and whose regular replacement is part of the normal maintenance of the machine.

## 9- DATASHEET

		FT/CA	FTC/HCA	FTG/CAS
Dimensions and Weights				
Dimensions (DxdxH)	mm	332x314x1132	332x314x1133	332x314x1134
Net Weight I raw	Kg	24   26	26   28	28   30
Connexions				
Voltage I Frequency	V   Hz	230   50	230   50	230   50
Maximal Power	W	80	1580	180
Annual Consumption (Std by)	kWh			
Electrical connection	Type	3G1mm <sup>2</sup>	3G1mm <sup>2</sup>	3G1mm <sup>2</sup>
Hydraulic connection	Inch	1/4"	1/4"	1/4"
Conditions de fonctionnement				
Ambiant Water flow	l/h	120	120	120
Cold water flow (ΔT 10°C)	l/h	30	30	30
Water flow rate	l/mn	2	2	2
Water pressure	bar	2   4.5	3   4.5	4   4.5
Water inlet temperature	°C	+5   +25	+5   +25	+5   +25
Ambient temperature	°C	+10   +30	+10   +30	+10   +30
Thermal exchanger		Banc de glace	Banc de glace	Banc de glace
Refrigerant	gr	R134a   48	R134a   48	R134a   48
Hot water temperature	°C		85	

For You and Planet Blue.

