



Condensate Neutraliser 0-35KW  
for single boilers up to 35KW

# CONTENTS

INTRODUCTION.....	3
SAFETY INSTRUCTIONS.....	3
PACKING .....	4
SPECIFICATIONS.....	4
DIMENSIONS.....	5
ASSEMBLY .....	5
MAINTENANCE.....	6
CONSUMABLES .....	7
INSTALLATION OF THE NEUTRALISER CHARGE.....	7

# INTRODUCTION

## IMPORTANT:

Please read these instructions carefully before connecting, filling with water or using the device. Failure to comply with the instructions for use may invalidate the warranty. **BWT** reserves the right to modify the technical features of its products without prior notice.

Dear Customer,

Thank you for putting your trust in BWT. We have taken the utmost care in the design and manufacture of this product. However, please let us know if you discover any anomalies or have suggestions for improvement.

## IMPORTANT:

Connections must be made in accordance with the regulations appropriate to the respective trade sector and the standards applicable to the premises or area where the device is installed.

Once installed, this device will neutralise the discharge of a condensing boiler condensate up to 35 kW, thereby eliminating acidity. It is delivered ready to install and is easy to assemble.

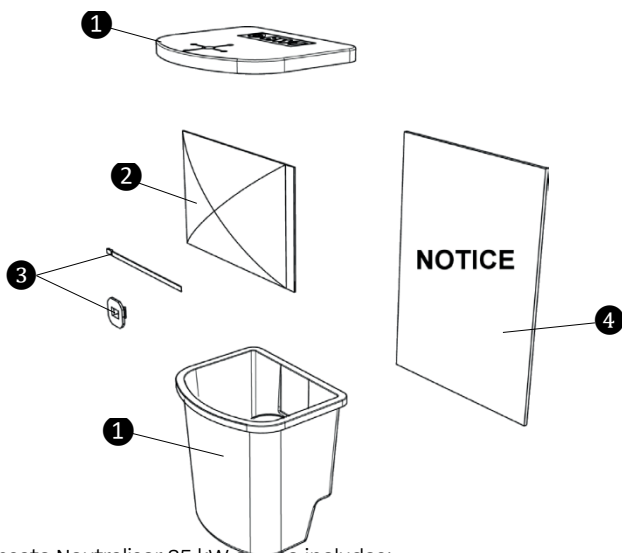
Certain specific procedures must be followed for installing, commissioning and using your device. These instructions have been provided for you and your installer. Please show the instructions to your installer before commencing installation and please read them carefully yourself, as they contain all the information you need about your device and will help you become familiar with how it operates.

# SAFETY INSTRUCTIONS

## CONNECTING THE UNIT:

- It should be connected:
  - In accordance with the current standards in the sector.
  - In accordance with the standards applicable to the location or installation premises.
  - In accordance with the current legal provisions.
- Installation must be carried out by a qualified person.
- Before assembling and filling the device with water, please check that the device has not been damaged in transit.
- Before assembling or filling the device with water, it is the installer's responsibility to check the device's suitability for use and its compatibility with the fluid circulating within it (pressures, temperatures, flow rates etc.)
- This device is only intended for the application area referred to in these instructions. BWT will not accept liability for any other use.

## PACKAGING



The Condensate Neutraliser 35 kW device includes:

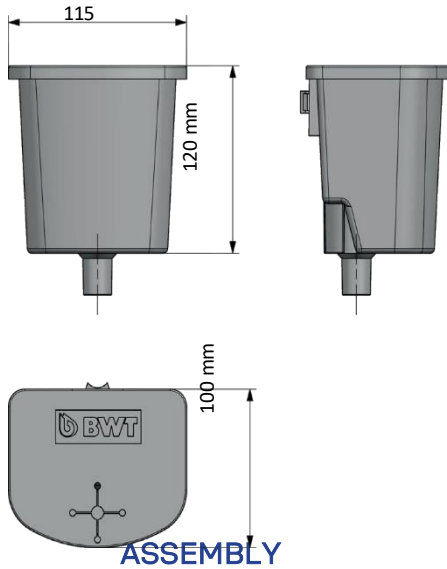
- 1** - The Neutraliser device (+ lid)
- 2** - A Neutraliser recharge
- 3** - A ring and clamp for wall mounting (on any vertical or horizontal pipe)
- 4** - A copy of these instructions

## TECHNICAL FEATURES

Feature	Value	
Interior diameter of condensate inlet pipe	mm	8 to 32
Maximum instantaneous throughput	Litres/h	20
Maximum operating temperature	°C	65
Min/max ambient temperatures	°C	5 / 40
Operating mass	kg	0.6
Maximum capacity of the condensing boiler	kW	35

Outlet pipe diameter (flexible hose not supplied): Ø16 mm (inside measurement) Discharge pipe diameter (attached to a vertical pipe): Ø32 to Ø40 mm

## DIMENSIONS



## ASSEMBLY

The device must be connected to the condensing boiler's condensate outlet. It may be:

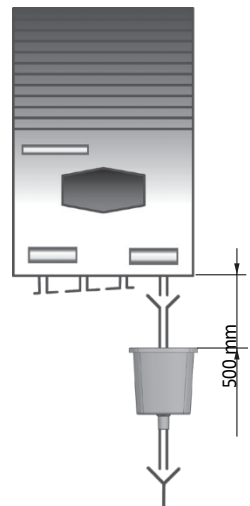
- installed just on the PVC pipe  $\varnothing 32$  or  $\varnothing 40$  mm (drain or standard vertical discharge pipe)
- or attached to a pipe (the ring ③ is used to mount it on a horizontal or vertical pipe).

The flow through the Neutraliser charge ② is by gravity, as shown in the diagram opposite. See also the chapter on page 7: 'Positioning of the Neutraliser charge'.

To ensure a good flow, the suggested minimum guard height should be observed as far as possible. However, the overflow protection system will prevent any blockage in the boiler.

Please ensure sufficient space for handling the device, e.g. removing and recharging the Neutraliser sachet ② or for carrying out annual cleaning.

Insert the boiler outlet pipe directly into the lid: the perforation on the lid ① holds the pipe in position. Check that it is securely in place.

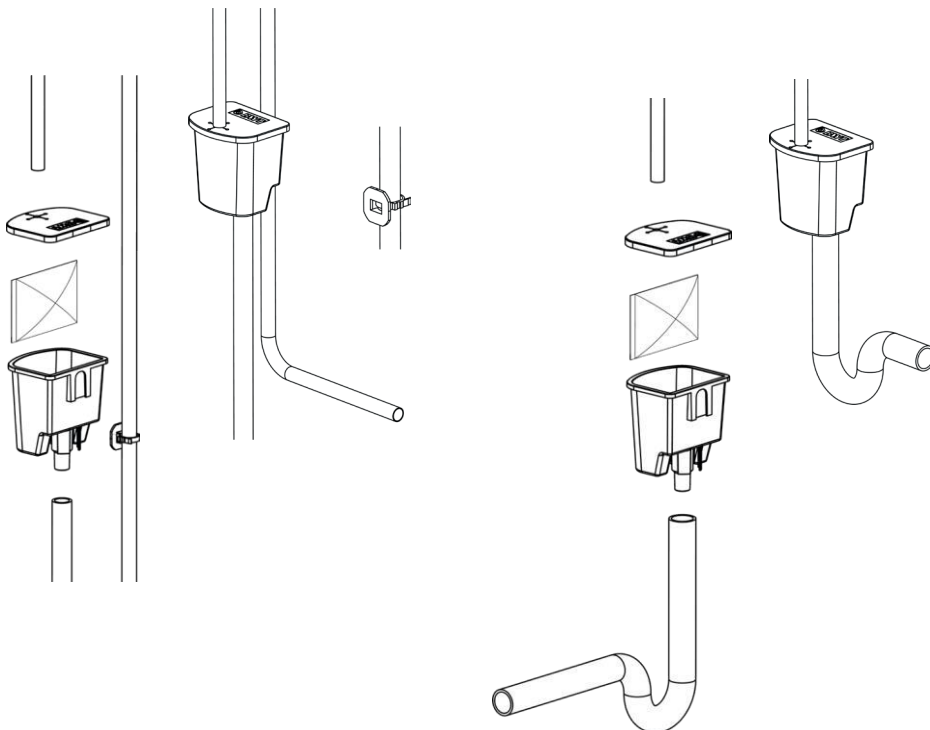


1. To empty the device:

- Place the device on a vertical discharge pipe of  $\varnothing 32$  or  $\varnothing 40$  (with the feet of the base stabilized around or inside the pipe).
- If wall-mounted, attach a flexible hose to the outlet nipple under the base of the device and connect it to an outlet (under the sink, drain, etc.).

#### NOTE:

Always monitor the incoming and outgoing flow. Do not raise the pipes above the entry point, and do not bend them, as drainage is achieved by gravity.



## MAINTENANCE

The sachet should be replaced when empty, or at least once a year. To check, open the lid ❶ (no need to remove the pipe from the boiler).

It is recommended that the interior of the device is cleaned ❶ every time the sachet is replaced ❷ and at least once a year.

Also clean the main casing ❶ if it is soiled or deposits have formed in the device. For this, use plain water only and a cloth, never solvents, detergents, alcohol, steel wool or abrasive media.

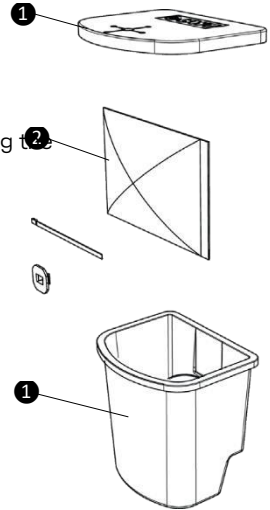
# CONSUMABLES

Code **PO048377** – Condensate Neutraliser O-35 kW Recharge

Neutraliser sachet: remove the used sachet **2** and, after cleaning the main casing of the device **1**, load a new sachet **2**.

The sachet must be positioned vertically against the internal wall of the filter casing inside the container, according to best industry practice. Never block the outlet.

Always check the flow of water through the device.



## INSTALLATION OF THE NEUTRALISER CHARGE



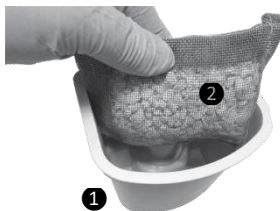
Neutraliser sachet



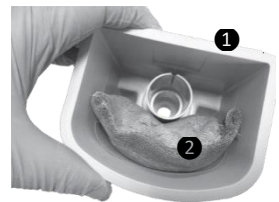
Cut the plastic bag along the dotted lines



Remove the Neutraliser sachet from its packaging



Insert the Neutraliser sachet into the Condensate Neutraliser as shown in the photo



Once the Condensate Neutraliser sachet is in its correct position, replace the lid.



BWT UK Limited  
BWT House, The Gateway Centre, Coronation Road,  
High Wycombe , Buckinghamshire. HP12 3SU

 01494 838100

 [enquiries@bwt-uk.co.uk](mailto:enquiries@bwt-uk.co.uk)

*[bwt.com](http://bwt.com)*